

XtraforsPuls

AC Integral Servos



Features

- AC Servomotors with integrated drive
- Sequence control and interpolation mode
- Stand-alone mode

Power

- Rated torque from 0.4 to 2 Nm
- Peak torque from 1.1 to 4 Nm
- Rated speed 3000 rpm

Interfaces

- RS-232
- Various fieldbusses
- Free configurable I/Os

Tools

- Fast-tuning
- Oscilloscope
- Remote control

XtraforsPuls, AC Integral Servos

XtraforsPuls integral servos are extremely compact and robust all-digital servo-drives. AC servomotor, feedback system, power stage and signal processing are combined in one single unit. Thus they offer the user an efficient fieldbus-compatible servo solution with dynamic closed-loop performance and high functionality.

Technical data

	Rated torque	Peak torque	Rated speed	Peak speed	Voltage
			@48VDC	@24VDC	
	[Nm]	[Nm]	[rpm]	[rpm]	[VDC]
BME 0407	0.4	1.1	3000	1500	24 / 48
BME 0807	0.8	2.6	3000	1500	24 / 48
BME 2007	2.0	4.0	3000	1500	24 / 48

Standard version

- Field busses P (PROFIBUS DPV0) or C (CANopen)
- Shaft with keyway
- Square flange (B5)
- Various safety functions
- Galvanic isolation between RS-232, Field bus, I/Os and power supply
- LED-System Display
- Brake control via field bus, RS-232 or automatic
- Analog input for general purpose

Options

- Gearbox
- Brake
- Special windings up to 11000 rpm

Communication interfaces

- RS232 up to 19.2 kbit/s baud rate
- CANopen up to 1 Mbit/s baud rate
- PROFIBUS DP up to 12 Mbit/s baud rate

I/O interfaces

- Dedicated digital I/Os (Enable, limit-switch, home sensor, etc.)
- User configurable digital I/Os
- All digital I/Os opto-isolated
- Analog input ± 10 V / 10 bit
- Amplifier OK relay output

Standards

- CE-certified

Speed Servo

- Speed or torque controller
- ± 10 V input for set value
- Ramp function

CANopen Servo

- CANopen interface according to DS-301
- CANopen drive profile according to DSP-402
- Up to 31 user defined sequences (Home, Position)
- Various operation modes (Homing, Interpolated Position, Profile Position, Velocity, Torque)
- Trapezoidal or S-curve profile generator
- Dedicated digital I/Os (Home-Index, Limit switch, Stop)
- User configurable digital I/Os
- Internal motor brake control
- Choice of stand-alone operation and control via CANbus or RS-232
- ± 10 V input for general purpose

PROFIBUS Servo

- PROFIBUS DP-V0 with PKW and PZD messages, SYNC and FREEZE functions
- Up to 31 user defined sequences (Home, Position)
- Various operation modes (Homing, Profile Position, Velocity, Torque)
- Trapezoidal or S-curve profile generator
- Dedicated digital I/Os (Home-Index, Limit switch, Stop)
- User configurable digital I/Os
- Internal motor brake control
- Choice of stand-alone operation and control via PROFIBUS or RS-232
- ± 10 V input for general purpose

Control loops

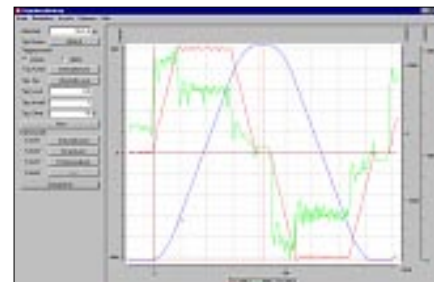
- Current loop 62.5 μ s
- Speed and position loop 250 μ s
- Position, speed or torque control
- Maximum speed up to 11000 rpm

Tools

- Fast tuning
 - Test functions and control of all operation modes via RS-232.
- The user software includes a four-channel digital oscilloscope as well as other tools.



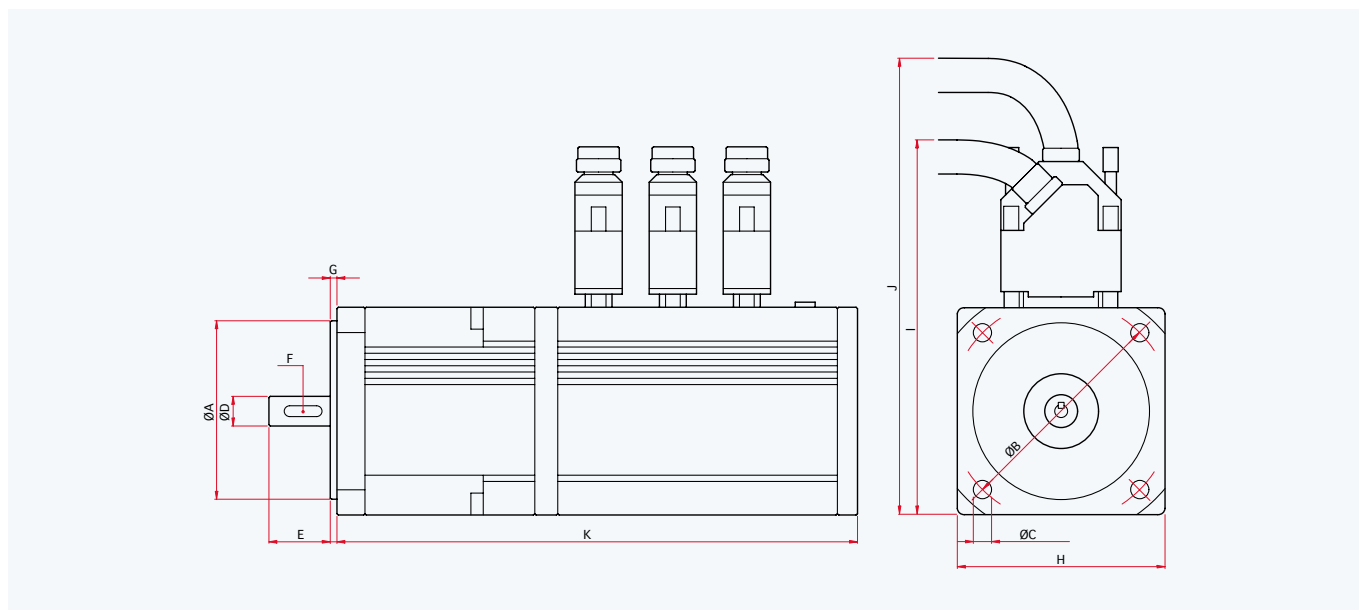
Main Menu



Oscilloscope

Dedicated and general purpose I/Os are available to control drive state, sequencer and trajectory generation. A XtraforsPuls integral servo combined with a gear-box provides a very compact and high performing servo-actuator. These features, together with the fast-tuning and easy-to-use concept, allow the user to cover a wide field of applications.

Mechanical dimensions



Dimensions [mm]		BME 0407	BME 0807	BME 2007
A Ø	j6	60	60	60
B Ø		75	75	75
C Ø		4x5.5	4x5.5	4x5.5
D Ø	k6	11	11	11
E		23	23	23
F	DIN 6885	A4x4x14	A4x4x14	A4x4x14
G		2.5	2.5	2.5
H		70	70	70
I	exit 45°	127	127	127
J	exit straight	155	155	155
K	without brake	180	200	236
	with brake	210	230	270

Addresses

Switzerland

Infranor SA

Place de la Gare 5
CH-1296 Coppet

Phone +41 22 960 70 70

Fax +41 22 960 70 80

www.infranor.ch
infranor@infranor.ch

Infranor AG

Schaffhauserstrasse 418
CH-8050 Zürich

Phone +41 44 308 50 00

Fax +41 44 308 50 09

www.infranor.ch
infranor@infranor.ch

Germany

Infranor GmbH

Donaustrasse 19a
D-63452 Hanau

Phone +49 6181 18012 0

Fax +49 6181 18012 90

www.infranor.de
info@infranor.de

France

Infranor SAS

3, avenue Louis Delage
F-91310 Linas

Phone +33 1 69 633 515

Fax +33 1 69 633 516

www.infranor-france.com
infranor@infranorfrance.com

Spain

Infranor Spain SL

Occitània, 24
E-08911 Badalona
(Barcelona)

Phone +34 93 460 16 31

Fax +34 93 399 96 08

www.infranor.es
infranor@infranor.es

Benelux

Infranor B.V.

Albert Einsteinstraat 6
NL-3261 LP Oud-Beijerland

Phone +31 186 610 155

Fax +31 186 614 535

www.infranor.nl
info@infranor.nl

England

Infranor Ltd.

Unit 60A, Smithbrook Kilns
Cranleigh
UK-Surrey GU6 8JJ

Phone +44 1483 274 887

Fax +44 1483 276 037

www.infranor.ltd.uk
sales@infranor.ltd.uk

USA

Infranor, Inc.

299 Ballardvale Street Suite 4
USA-Wilmington, MA 01887

Phone +1 978 988 9002

Fax +1 978 988 9112

www.infranorusa.com
info@infranorusa.com

China

Infranor Motion Control Technology (Shanghai) Co., Ltd.

Room 4E, Building A4
No. 700 Yishan Rd
CN-200233 Shanghai

Phone +86 21 6440 1095

Fax +86 21 6440 1095

www.infranor.cn
info@infranor.cn



The Infranor Group

Infranor creates added value for its customers by providing tailor-made motion solutions.

Based on strong working relationships, Infranor offers extensive market know-how, comprehensive engineering skills and a wide range of high-quality products leading to productivity gains and therefore to comparative advantages for its customers in their respective markets.

The Infranor Brand

The Infranor Brand is a synonym for:

- Excellence
- Cooperation
- Added value