

In PUJOL, we make gear reducers, geared motors and elements of standardized transmission, under a process of continuous improvement and based on the highest technological and efficient parameters available, where, besides, priority is given always to the reliability of the product and putting quality of the process manufacturing first, as design philosophy.

The focal point of the company are their departments of investigation and development, which along with the department of Marketing and Sales, adapts and develop along with solutions that allow to satisfy new and always changing needs of the different industrial markets.

Machined parts are produced in cutting machines, grinding machines, horizontal and vertical machining centres, cells of flexible manufacture, ovens of thermal treatment and universal grinding machines.

The reliability of all the processes is ensured by the department of Quality and Control, endowed with three-dimensional machines, able to verify with extreme precision the finishing of the components. The testing benches, for verification and experimentation, ensure the performance and final technological qualities.

Change of shareholding and creation of Gear Solutions ES, S.L., becoming part of and European industrial group.



TECO products are incorporated into the range of original PUJOL products.



1998



The manufacture of 1,5MW multipliers for the wind energy sector and zero-clearance solar trackers is consolidated.

2014



Teco Group acquires the company Gear Solutions ES.

2015

2016



Renovation and improvement of the main series with major industrialization by PUJOL.

2017



PRESENT ALL OVER THE WORLD



C/Costa del Pla 3, Pol.Industrial "Pla del Camí"  
08297 Castellgalí (Spain)  
T.+34 93 878 90 55 · F.+34 93 876 03 36  
[www.pujol.com](http://www.pujol.com) · [comercial@pujol.com](mailto:comercial@pujol.com)



INTEGRATED  
DRIVE AND  
CONTROL  
SOLUTIONS



The origin of **PUJOL** was in 1918, but it was in 1965 when the Pujol brand was first registered with its first range of standard gear reducers.

The international projection of PUJOL, has oriented its business sensitivity to technological solutions that support the creative intelligence of engineering, engineers, designers and industries of all the industrial activities.

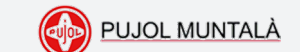
Nowadays PUJOL, is one of the companies of the TECO Group, becoming part of one of the more important industrial groups of the world, complemented with a product portfolio, with capacity to offer complete and integrated solutions, both on gearmotor functions and on control.

Begins its activity in Manresa. Jose Pujol Muntala, manufacturing spare parts of textile machinery.

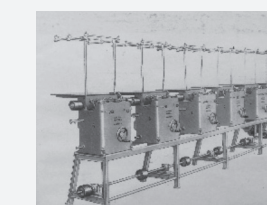


1918

The brand PUJOL MUNTALA, S.A. is registered and series manufacture starts.



1965



Design of the first gearbox and mechanical automatism.

1932

Major internal renovations and acquisition of a Foundry in Sant Fruitós de Bages.



1988



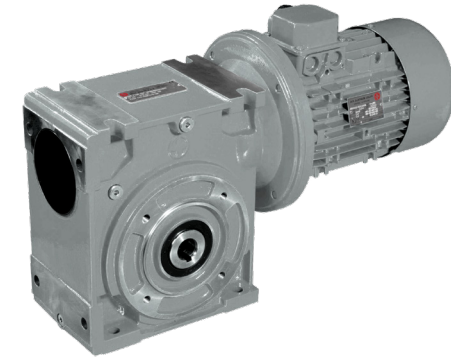
Pujol expands to worldwide level opening delegations and centers in all the continents

1982

NCE AT YOUR SERVICE

100 YEARS OF EXPERIENCE

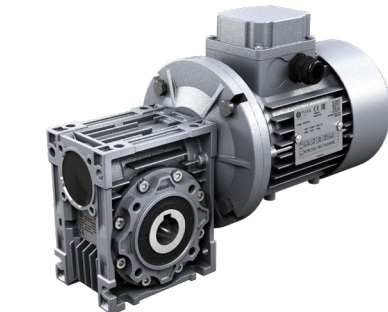
## WORM GEARBOXES



### LXW SERIES

**CAST IRON HOUSING**  
Worm gearbox  
RAL7031 epoxy finish

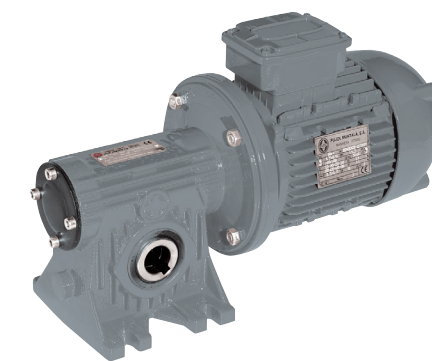
<b>Size</b>	90 - 110 - 130
<b>Power</b>	up to 18,5 kW
<b>Nominal torque</b>	up to 1.025 Nm
<b>Ratio</b>	from 7,5 to 100
<b>Different input and output versions and accessories available</b>	



### LAX SERIES

**ALUMINIUM HOUSING**  
Worm gearbox  
RAL7031 epoxy finish

<b>Size</b>	30, 40, 50, 63, 75, 90, 105
<b>Power</b>	up to 11,5 kW
<b>Nominal torque</b>	up to 680 Nm
<b>Ratio</b>	from 5 to 10.000
<b>Different input and output versions and accessories available</b>	

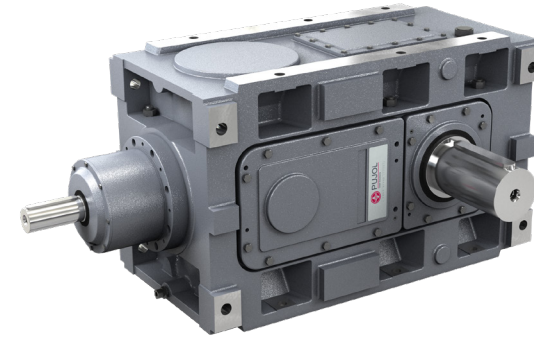


### LWP - LWB SERIES

**CAST IRON HOUSING**  
Worm gearbox  
RAL7031 epoxy finish

<b>Size</b>	40 - 50 - 63
<b>Power</b>	up to 4 kW
<b>Nominal torque</b>	up to 140 Nm
<b>Ratio</b>	from 5 to 100
<b>Different input and output versions and accessories available</b>	

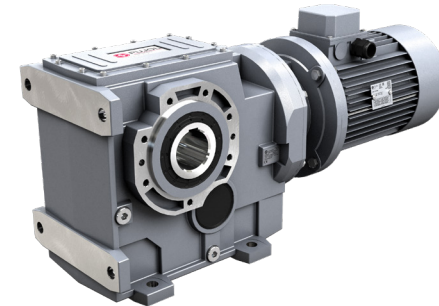
## RIGHT ANGLE GEARBOXES



### TB SERIES

**CAST IRON HOUSING**  
Helical bevel gearbox  
RAL7031 epoxy finish and registration cover

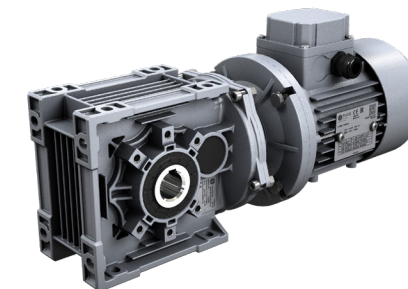
<b>Size</b>	018 - 020 - 022 - 025 - 028 - 032 - 035
<b>Reduction stage</b>	2 - 3 - 4
<b>Nominal torque</b>	up to 78.000 Nm
<b>Ratio</b>	from 1,25 to 760
<b>Different input and output versions and accessories available</b>	



### KXB SERIES

**CAST IRON HOUSING**  
Helical bevel gearbox  
RAL7031 epoxy finish and registration cover

<b>Size</b>	353 - 403 - 503 - 603 - 703 - 903 - 1003
<b>Power</b>	up to 90 kW
<b>Nominal torque</b>	up to 13.000 Nm
<b>Ratio</b>	from 5,71 to 187,24
<b>Different input and output versions and accessories available</b>	

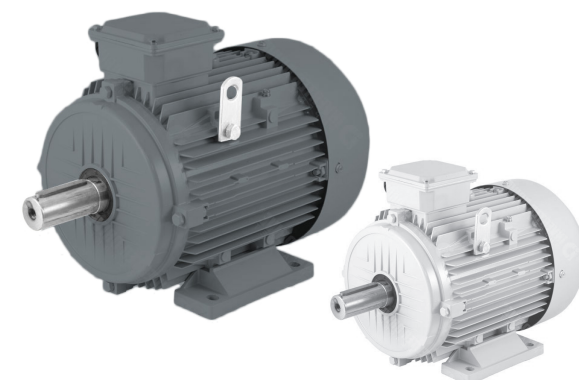


### KXA SERIES

**ALUMINIUM HOUSING**  
Helical bevel gearbox  
RAL7031 epoxy finish and registration cover

<b>Size</b>	202 - 252 - 253 - 352 - 353
<b>Power</b>	up to 4,8 kW
<b>Nominal torque</b>	up to 450 Nm
<b>Ratio</b>	from 7,62 to 442,76
<b>Different input and output versions and accessories available</b>	

## ELECTRIC MOTORS

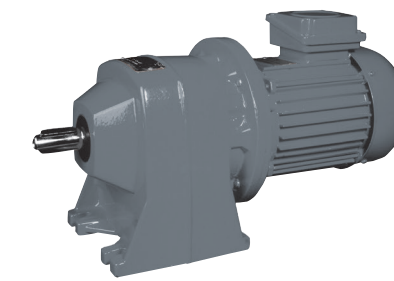


### ENDF - SDF - ADF - NDF SERIES

**CAST IRON HOUSING AND ALUMINIUM HOUSING**  
Three phase electric motors IEC. Feet and flange versions

TECO motors specially designed for the European market	
Manufactured in our own factory, ensuring total quality control	
Stored in Europe 2, 4, 6 and 8 pole electric motors	
Aluminium motors IE2 & IE3. From housing 063 to 160	
Cast iron motors IE2 & IE3. From housing 080 to 400	
High-power motors, please consult	

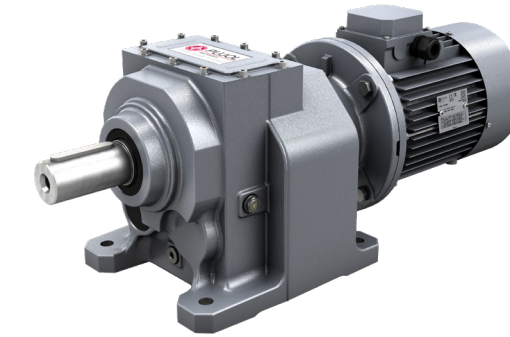
## IN-LINE GEARBOXES



### IP - IB SERIES

**CAST IRON HOUSING**  
Helical gearbox  
RAL7031 epoxy finish

<b>Size</b>	84 - 102 - 128 - 142 - 162
<b>Power</b>	up to 7,5 kW
<b>Nominal torque</b>	up to 617 Nm
<b>Ratio</b>	from 2,1 to 46,03
<b>Different input and output versions and accessories available</b>	

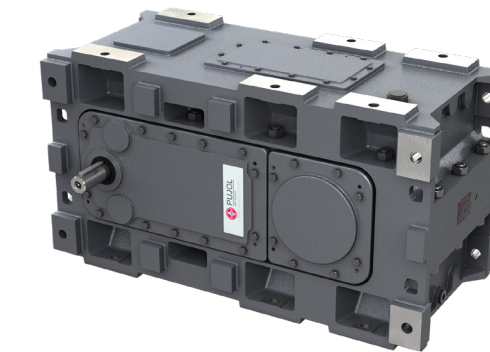


### SXH SERIES

**CAST IRON HOUSING**  
Helical gearbox  
RAL7031 epoxy finish and registration cover

<b>Size</b>	252 - 253 - 302 - 303 - 352 - 353 - 402 - 403 - 502 - 503 - 602 - 603 - 702 - 703 - 902 - 903
<b>Power</b>	up to 45 kW
<b>Nominal torque</b>	up to 8.000 Nm
<b>Ratio</b>	from 1,23 to 282,1
<b>Different input and output versions and accessories available</b>	

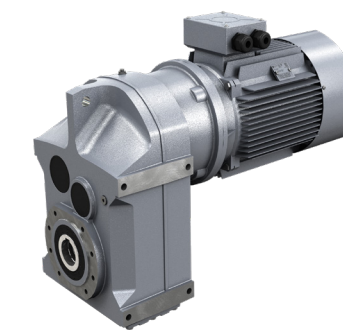
## PARALLEL SHAFT GEARBOXES



### TP SERIES

**CAST IRON HOUSING**  
Parallel helical shaft gearbox  
RAL7031 epoxy finish and registration cover

<b>Size</b>	018 - 020 - 022 - 025 - 028 - 032 - 035
<b>Reduction stage</b>	1 - 2 - 3 - 4
<b>Nominal torque</b>	up to 78.000 Nm
<b>Ratio</b>	from 1,25 to 760
<b>Different input and output versions and accessories available</b>	



### DXS SERIES

**CAST IRON HOUSING**  
Shaft mounted gearbox  
RAL7031 epoxy finish and registration cover

<b>Size</b>	302 - 303 - 352 - 353 - 402 - 403 - 502 - 503 - 602 - 603 - 702 - 703 - 802 - 803
<b>Power</b>	up to 97 kW
<b>Nominal torque</b>	up to 9.350 Nm
<b>Ratio</b>	from 4,06 to 394,69
<b>Different input and output versions and accessories available</b>	

## VARIABLE SPEED DRIVES



### INVERTER L501S

**TECO**  
Frequency inverter of general purpose. Vector control (SLV) & V/f

110 and 230V mono phase
400V three phase
0.2 - 11 kW
IP20



### INVERTER E510

**TECO**  
Frequency inverter of general purpose. Vector control (SLV) & V/f

230V mono phase, 200V and 400V three phase
0,37 - 18,5kW
Vector control
IP20 and IP66



### INVERTER A510S

**TECO**  
Frequency drive of vector control and high benefits. Double curve

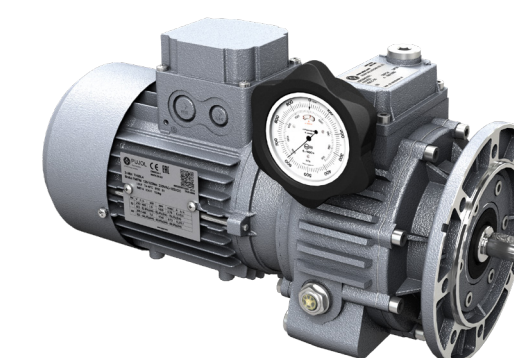
6 motors control modes - V/F, V/F with encoder
Current vector control with and without encoder
Permanent magnet motors (PM) with and without encoder
Dual core processor, 100Mhz RISC and ASIC
0,75 - 355kW, 400V



### INVERTER F510

**TECO**  
Pump / Ventilation frequency inverter of vector control (SLV) & V/f

Available in IP00, IP20 and IP55 versions
3,7 - 600 kW
Integrated EMC filter
Multi-pump function
Pump protection functions



### VBC SERIES

**CAST IRON HOUSING**  
Speed variator  
RAL7031 epoxy finish

<b>Size</b>	02 - 03 - 04 - 05 - 06 - 07 - 08
<b>Power</b>	up to 9,2 kW
<b>Nominal torque</b>	up to 144 Nm
<b>Speed range</b>	from 122 to 2.000 rpm
<b>Different input and output versions and accessories available</b>	